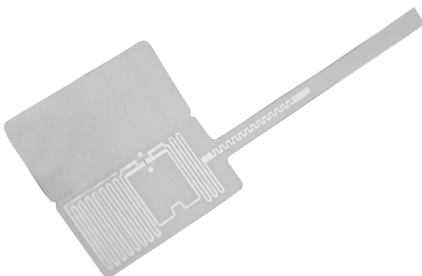


# rfidmarket

This Jewellery adhesive label is compliant with the EPC C1G2 (ISO18000-6C) standard, operating frequency is 860~960MHz (It can be used worldwide). Each tag has a unique ID and stores user data.

RFID jewellery labels are designed for retail store inventory, tracing on shelves, and warehouse management. Jewellery smart management entails merging RFID tags attached to precious jewellery. This can track and record the entry, exit, and sales process of jewellery products in a structured way, replacing the wasteful and onerous artificial management and bar code scanning mode with new automated, exact, and efficient techniques.



## Key Benefits

### UHF PET

### Jewellery Label

- Best solution for jewellery, glasses, and watch tracking.
- Used for brand anti-counterfeiting, inventory counting, and anti-theft tracking.
- Logo, barcode, QR code customization.
- Optimized to operate close proximity to small metal or metallic coated objects.



*We do lead your digital transformation*

UHF PET Jewellery Label (RFM-10200005)	
Material	PET
Dimensions	68x13 mm
Working Tempeture	-40 °C ~ +85°C
IP Rating	IP68
RFID Standard	EPC C1G2 (ISO18000-6C)
Chip Type	UCode 8
EPC Memory	128bit
TID Memory	96bit
User Memory	32bit
Read Range	2W ERP FCC: 8m, 2W ERP ETSI: 3.5m
Installation	Adhesive
Customization	Logo, barcode / QR code, number printing, and so forth.

## Application



Jewellery

Security Management



Watch

Security Managemet



Glasses

Control Management



Bag

Tracking Management

## Get To Know About Us

Epozy is providing top national/multinational companies by designing, developing, and implementing RFID projects includes both software and hardware. We have always challenged our accounts to build together for better, smarter, more optimized, and sophisticated industrial solutions which are already core competencies of Epozy itself. We believe that effective communication is the key to project success.

